

**SILVERSTAR BIRDPROTECT**

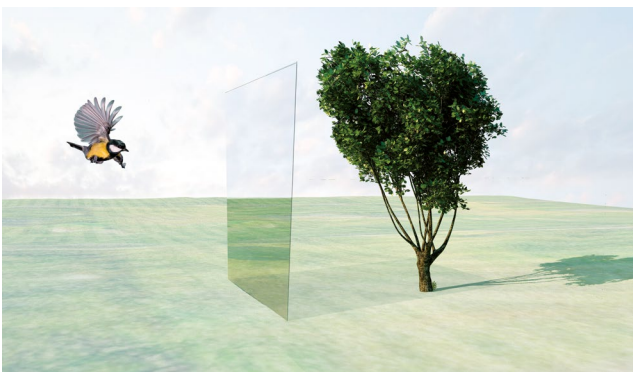

Bird protection glass

## Collision hazards for birds

### The birds' perception

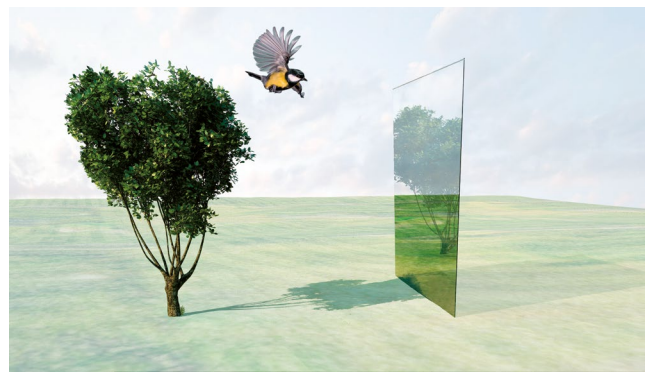
For a long time, birds were the undisputed rulers of the sky. Obstacles were always visible and the birds avoided them with ease. However, evolution has not prepared them for dangers such as glass walls. Glas Trösch offers solutions for two different causes of bird collisions with glass.

### Transparency (transmission)



The most common cause of collisions with glass is its transparency. A bird looks through a glass frontage and sees a tree, the sky or landscape it wants to reach. It flies directly towards it and subsequently crashes into the pane of glass. The more transparent and extensive the glass frontage, the greater the danger.

### Mirrored image (reflection)



The second cause is reflections. Depending on the type of pane, the lighting and the interior of the building, the surroundings are reflected to varying degrees. If parkland is reflected, it simulates an attractive habitat for the bird. The bird flies directly towards it without realising that it is just a reflection.

## Collision hazards for birds

There are countless situations in everyday life where panes of glass used in architecture present an increased risk of collision for birds. Some of these are depicted in the following illustrations.

To counteract the risks of birds colliding with glass, SILVERSTAR BIRDprotect offers suitable bird impact solutions for every type of structure.

